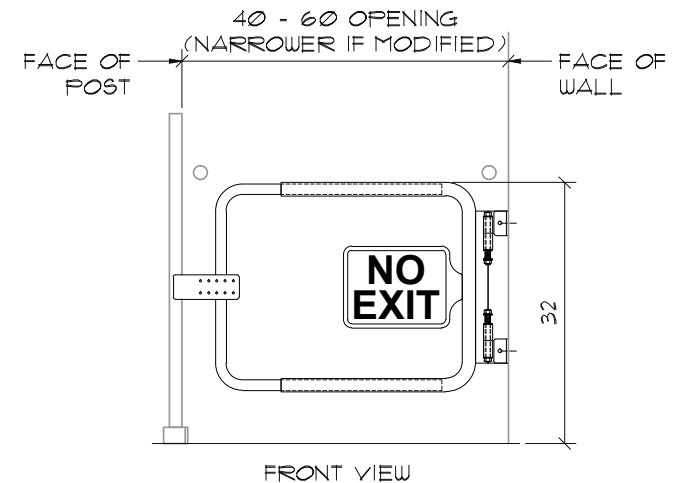
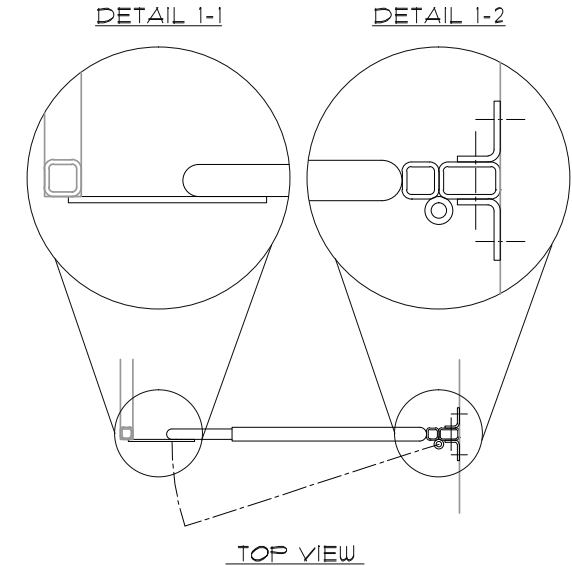


SINGLE SWING GATE (WALL MOUNT)

1. The gate swing is universal. Flip and rotate the gate for desired swing direction.
2. The top of the gate should be installed 32 inches above the floor. This allows the gate to open fully, without interrupting the hand grab.
3. The gate is designed to self stop. The stop plate helps prevent unintentional damage at the mount. The stop plate has holes for adjustability to reach the post. The stop plate should rest on the post in the closed position. (see Detail 1-1 and Front View)
4. The connection angles can be reversed to offset the gate further from the wall or the post.
5. When mounting to stud walls, it is important that backing exists in the wall. Use the provided lag bolts to mount to the backing. (see Detail 1-2)
6. When mounting to concrete or CMU, use the provided expansion anchors. (see Detail 1-2)
7. For narrower openings, use a saw to cut both male and female hoop legs. Shorter legs allow a narrower opening. Cut only what is needed to allow final adjustments.
8. The gap between any obstructions should be no less than 1 1/2" to avoid a pinch point.
9. Lock the gate width in place by welding the female hoop to the male hoop. Sand welds to avoid injury. You can also drill a hole at the underside of the bottom female hoop to install a set screw to avoid welds.
10. After install, paint the gate to match the building.
11. Attach the photoluminescent sign to the sign plate after the finish paint is dry.

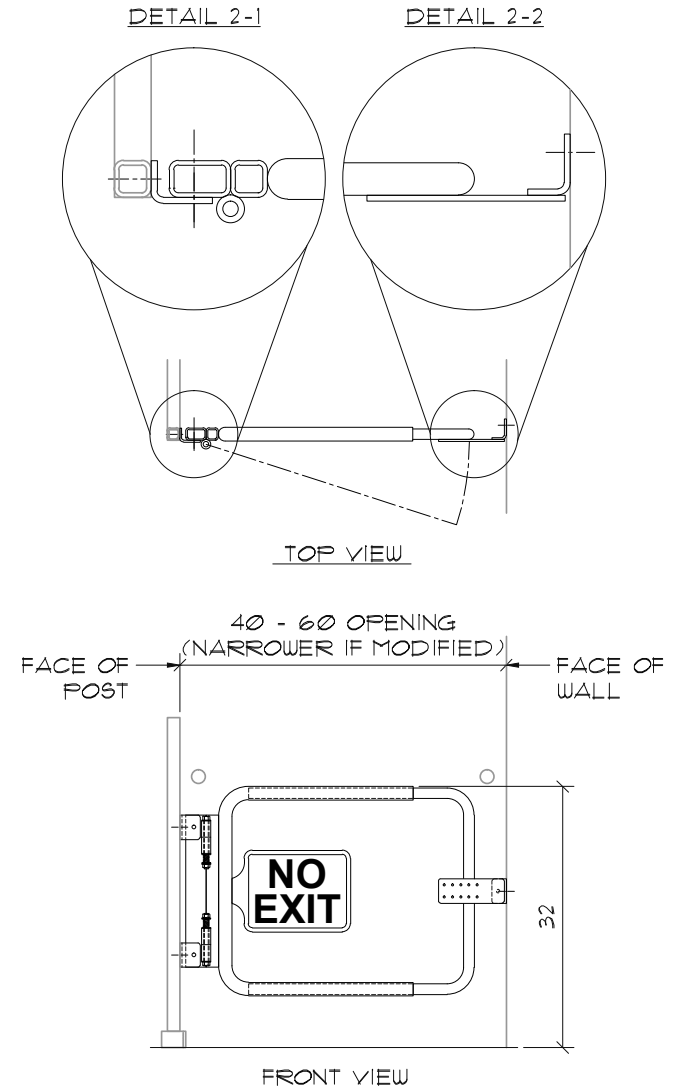
YOU NEED TOOLS TO INSTALL
WELDER, GRINDER, SAW, HAND DRILL, 1/16" DRILL BIT, WRENCHES



SINGLE SWING GATE (POST MOUNT)

1. The gate swing is universal. Flip and rotate the gate for desired swing direction.
2. The top of the gate should be installed 32 inches above the floor. This allows the gate to open fully, without interrupting the hand grab.
3. The gate is designed to self stop. The stop plate helps prevent unintentional damage at the mount. After mounting the gate, anchor one of the unused mounting angles to the wall while the gate is at it's closed position. The stop plate should rest on the post in the closed position. The stop plate has holes for adjustability to reach the angle. (see Detail 2-2 and Front View)
4. The mounting angles are reversed to offset the gate further from the post to allow a bolted connection. (see "Other Post Connections" for alternative mounting)
5. When mounting to stud walls, it is important that backing exists in the wall. Use the provided lag bolts to mount to the backing. (see Detail 2-2)
6. When mounting to concrete or CMU, use the provided expansion anchors. (see Detail 2-2)
7. For narrower openings, use a saw to cut both male and female hoop legs. Shorter legs allow a narrower opening. Cut only what is needed to allow final adjustments.
8. The gap between any obstructions should be no less than 1 1/2" to avoid a pinch point.
9. Lock the gate width in place by welding the female hoop to the male hoop. Sand welds to avoid injury. You can also drill a hole at the underside of the bottom female hoop to install a set screw to avoid welds.
10. After install, paint the gate to match the building.
11. Attach the photoluminescent sign to the sign plate after the finish paint is dry.

YOU NEED TOOLS TO INSTALL
WELDER, GRINDER, SAW, HAND DRILL, 1/16" DRILL BIT, WRENCHES



DOUBLE SWING GATE (POST + WALL MOUNT)

1. The gate swing is universal. Flip and rotate the gate for desired swing direction.
2. The top of the gate should be installed 32 inches above the floor. This allows the gate to open fully, without interrupting the hand grab.
3. The gate is designed to self stop. On a double swing gate install, the stop plates are not used.
4. The mounting angles are reversed to offset the gate further from the post to allow a bolted connection. (see "Other Post Connections" on the "Post Mount" page for alternative mounting)
5. When mounting to stud walls, it is important that backing exists in the wall. Use the provided lag bolts to mount to the backing. (see Detail 3-2)
6. When mounting to concrete or CMU, use the provided expansion anchors. (see Detail 3-2)
7. For narrower openings, use a saw to cut both male and female hoop legs. Shorter legs allow a narrower opening. Cut only what is needed to allow final adjustments.
8. The gap between any obstructions should be no less than 1 1/2" to avoid a pinch point.
9. Lock the gate width in place by welding the female hoop to the male hoop. Sand welds to avoid injury. You can also drill a hole at the underside of the bottom female hoop to install a set screw to avoid welds.
10. After install, paint the gate to match the building.
11. Attach the photoluminescent sign to the sign plate after the finish paint is dry.

YOU NEED TOOLS TO INSTALL
WELDER, GRINDER, SAW, HAND DRILL, 1/16" DRILL BITS, WRENCHES

