

## MODEL # P-2A UNIVERSAL RISER CLOSURE

### MANUFACTURED TO SPEC BUILDING CODE COMPLIANT

- **Use:** Universal profile for any riser height, supports self supporting treads and closes the stair risers
- **Material:** Hot Rolled Steel
- **Thickness:** 14 Ga. 12 Ga. 11 ga. 10 Ga. 1/8" metal plate
- **Finishes:** Unfinished steel, pre-galvanized, hot-dip galvanized, shop primer paint
- **Customize:** Riser height, laser cut holes, perforated riser

### FINISH OPTIONS



**Mild Steel**  
Unfinished



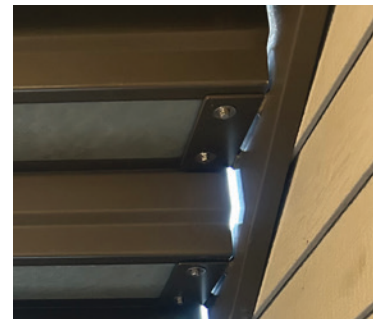
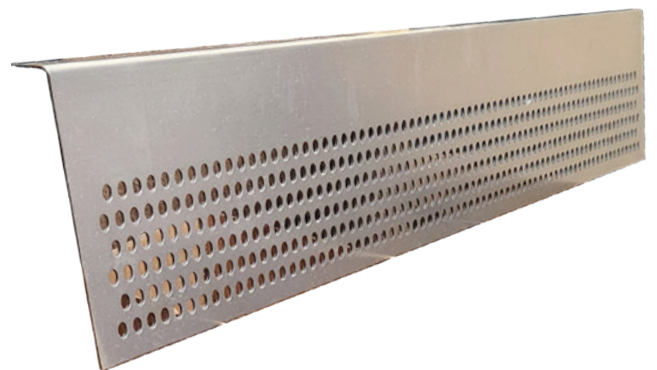
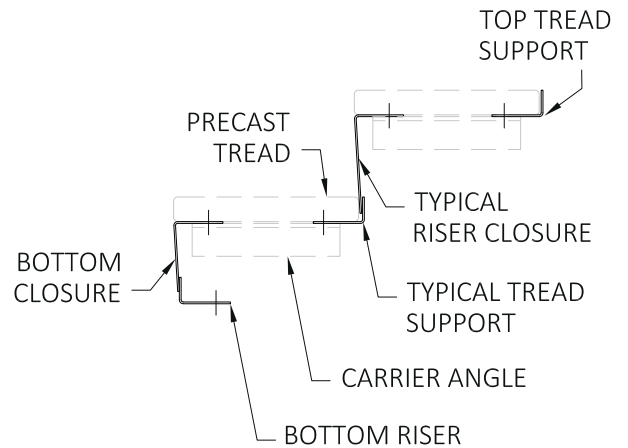
**Pre-Galvanized**  
Sheet



**Hot-Dip Galvanized**



**Shop Primer**  
Red



**FOR NEW OR EXISTING STAIR RESTORATION PROJECTS.**