

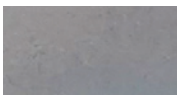
HIGH-QUALITY METAL STAIR TREADS AND PANS FOR METAL STAIRS

MODEL # P-3A CONCRETE FILLED STAIR PAN

MANUFACTURED TO SPEC BUILDING CODE COMPLIANT

- **Use:** Custom fabricated profiles for fabricating metal pan filled stairs
- **Material:** Hot Rolled Steel
- **Thickness:** 14 Ga. 12 Ga. 11 Ga. 10 Ga. 1/8" metal plate
- **Finishes:** Unfinished steel, pre-galvanized, hot-dip galvanized, shop primer paint
- **Customize:** Tread depth, riser height, nosing profiles, sanitary cove, perforated riser

FINISH OPTIONS



Mild Steel
Unfinished



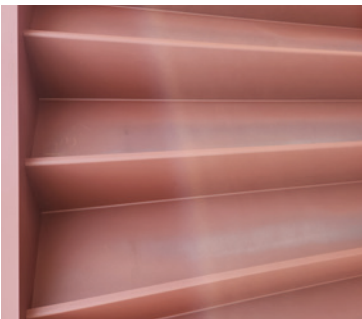
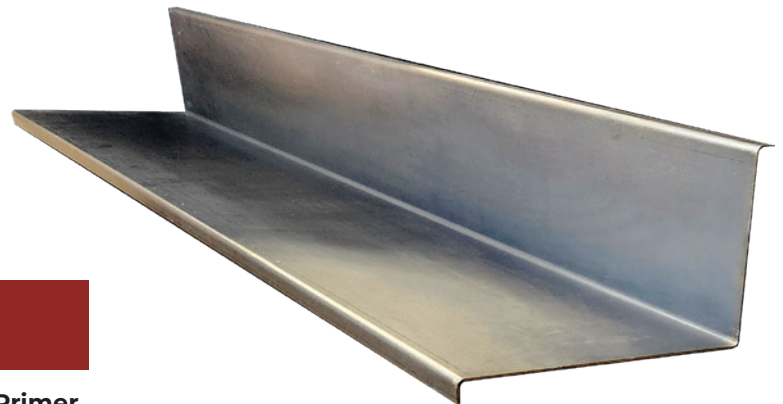
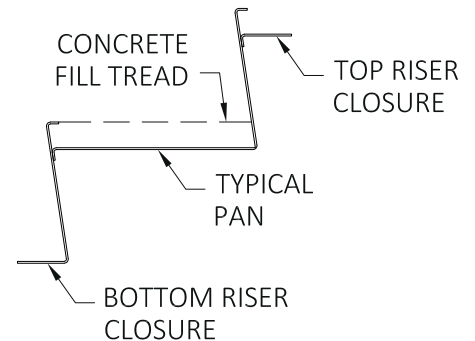
Pre-Galvanized
Sheet



Hot-Dip
Galvanized



Shop Primer
Red



FOR NEW OR EXISTING STAIR RESTORATION PROJECTS.