



HIGH-QUALITY METAL STAIR TREADS AND PANS FOR METAL STAIRS

MODEL # P-5A BAR GRATING STAIR TREAD

MANUFACTURED TO SPEC BUILDING CODE COMPLIANT

- **Use:** Serving as the final stair tread finish, the grating offering traction for walking and drainage
- **Material:** Various metal bar grating options
- **Thickness:** 1.5", 2.0", 2.5"+
- **Finish:** Unfinished steel, hot-dip galvanized, shop primer paint
- **Customize:** Grating style, thickness, width, length, carrier angles, riser closure plates, perforated riser

FINISH OPTIONS



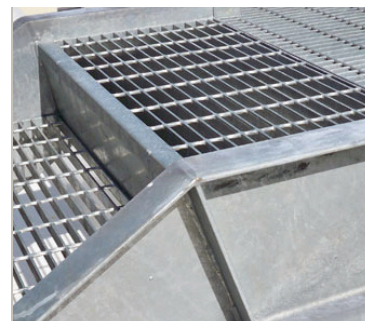
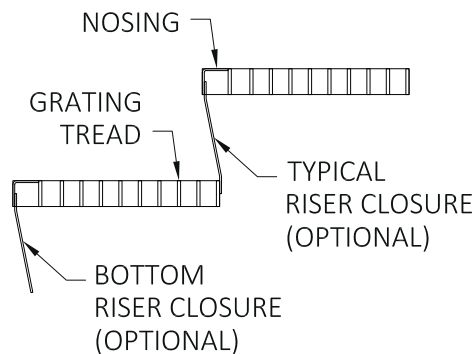
Mild Steel
Unfinished



Hot-Dip
Galvanized



Shop Primer
Red



FOR NEW OR EXISTING STAIR RESTORATION PROJECTS.