

Featured Projects

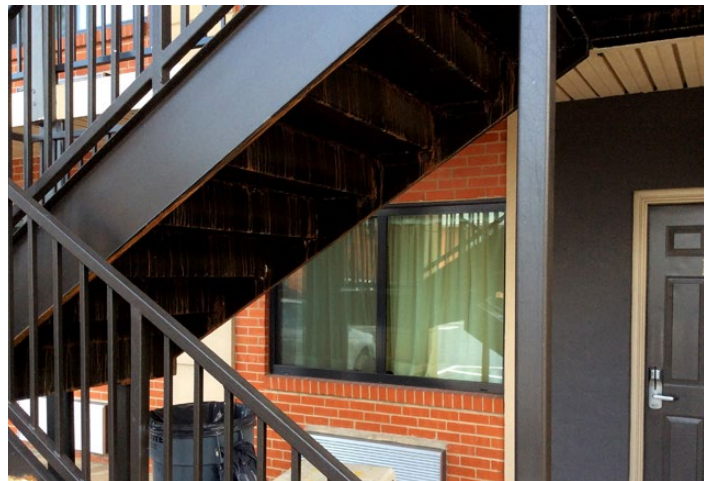
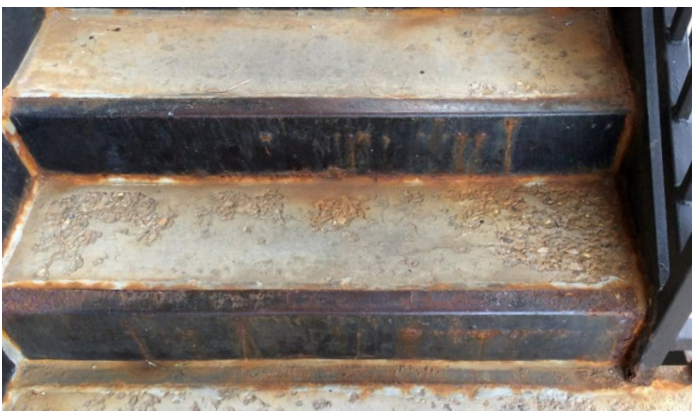
These featured projects showcase the quality, durability, and lasting solution of Perma-Tread as an alternative stair tread, landing, and deck finish. Featured below is inspiration for residential, commercial, or industrial applications.

TEXAS - HOTEL

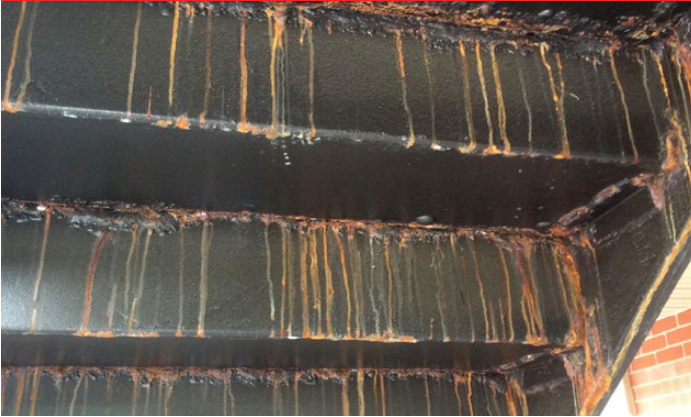
Pan Filled Metal Stair Replacement and Metal Stair Rail Salvage

The original metal stairs experienced major corrosion created by rain and moisture exposure. Over time, the metal stairs became a curb appeal issue and ultimately the corrosion created an unsafe stair for hotel visitors. To save costs, the customer had a local metal fabricator remove the original stairs, remove the rail, fabricate new stair frames and reinstall the original rail. Perma-Tread was installed as an alternative to precast concrete to provide a corrosion resistant solution. The end result was a faster, lightweight install, with stairs that won't corrode again when they are exposed to the costal environment.

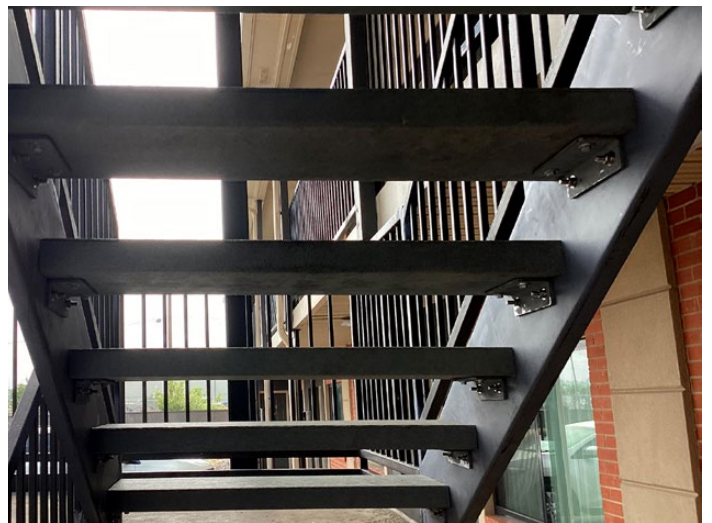
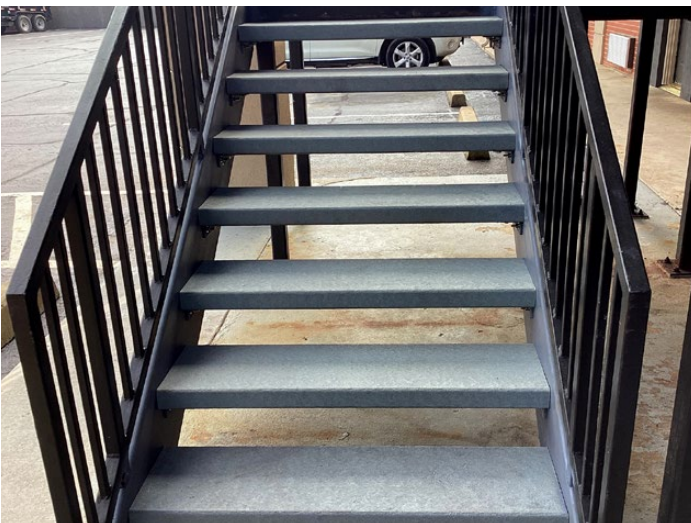
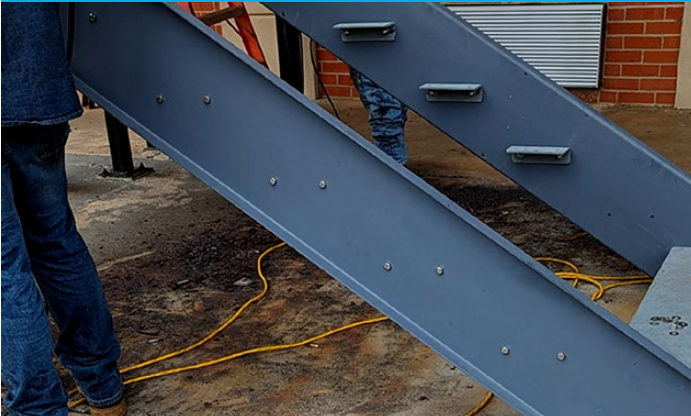
BEFORE



BEFORE



AFTER



OREGON - WAREHOUSE OSHA STAIRS

Interior Application

Perma-Tread was selected because of immediate availability, no loss, cost savings, no maintenance, non-corrosive properties, and for long lifespan as an alternative to precast concrete treads.

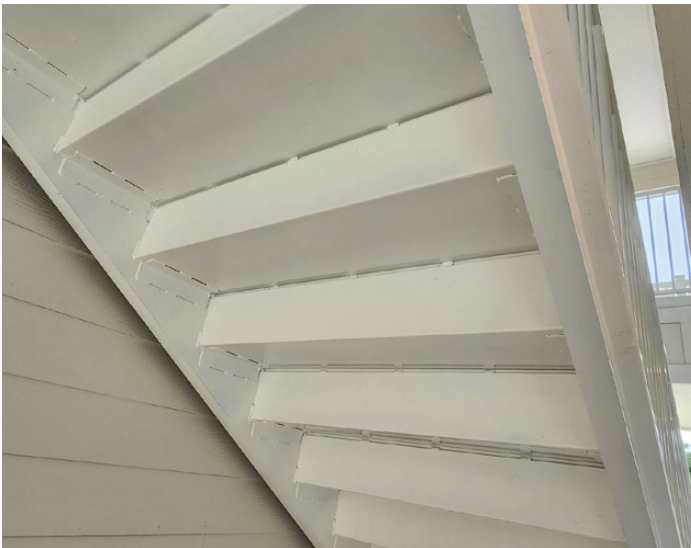




GEORGIA - NEW APARTMENT STAIRS

Exterior Application

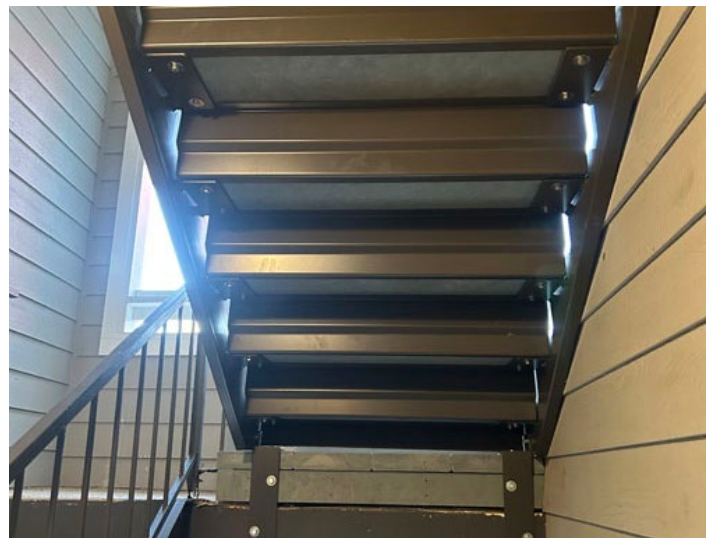
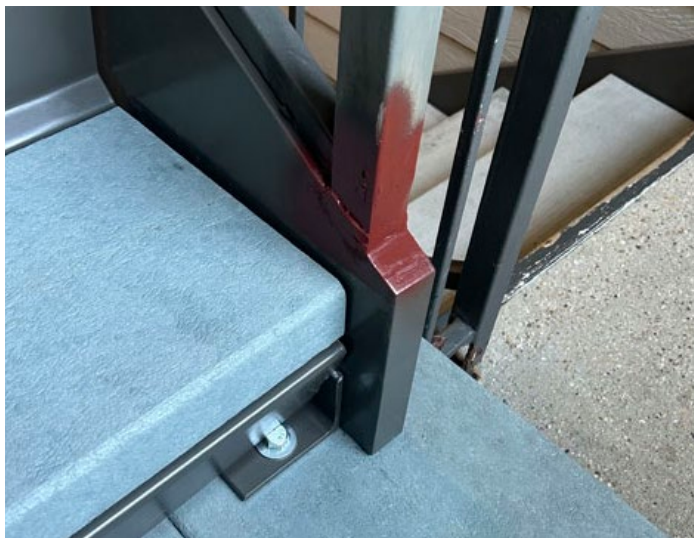
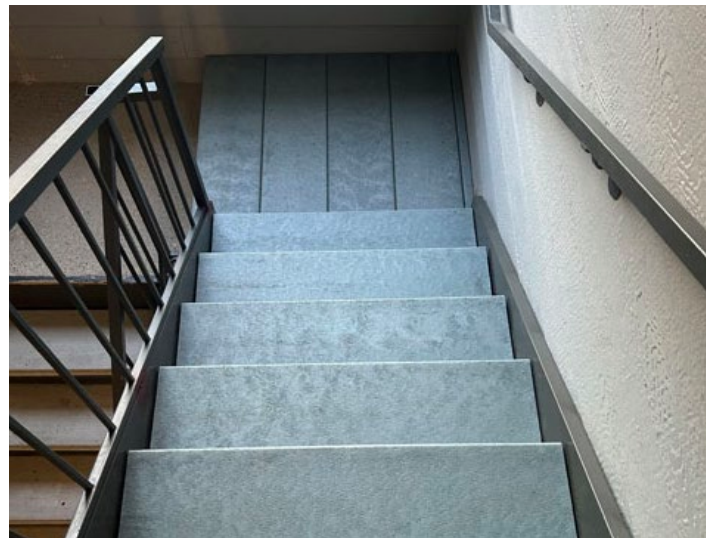
A new 150 apartment unit project with 26 stairways. The metal stairs we've fabricated with metal flat pans to accept Perma-Tread 212 as an instant alternative finish to precast concrete treads. The selected color was Weathered Concrete to resemble a traditional concrete look. Perma-Tread offered a lighter weight solution which greatly saved freight and installation costs. Perma-Tread was selected because of immediate availability, no loss, cost savings, no maintenance, non-corrosive properties, and for long lifespan as an alternative to precast concrete treads.



MARYLAND - EXISTING APARTMENT STAIR REPLACEMENT

Exterior Application

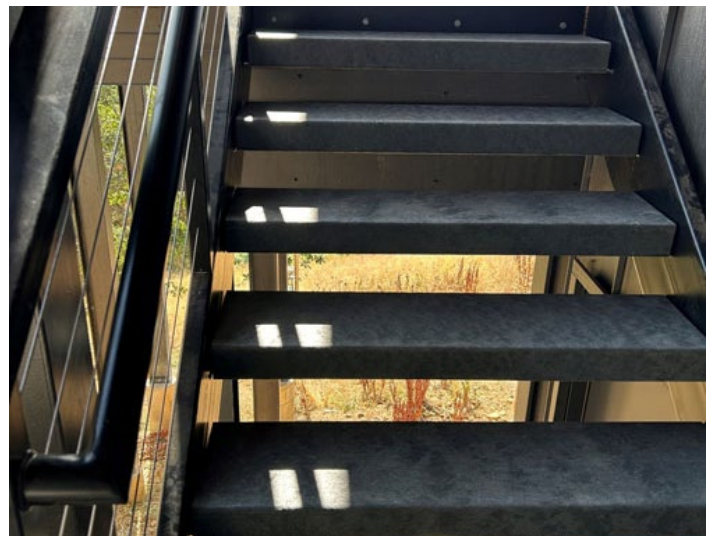
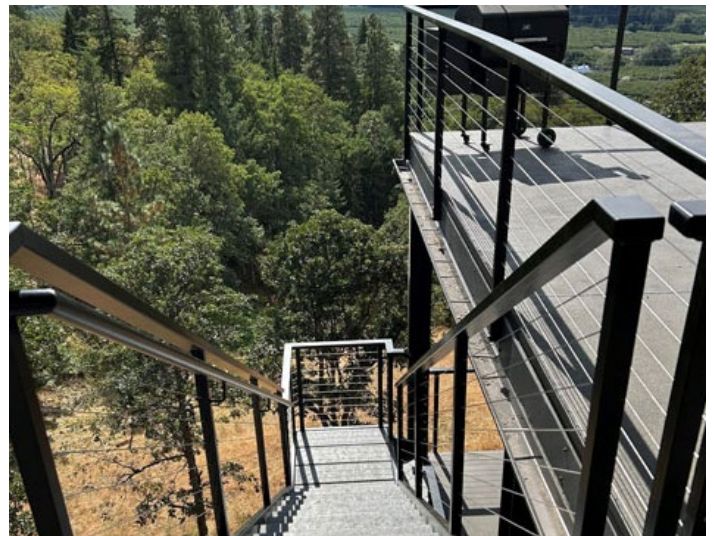
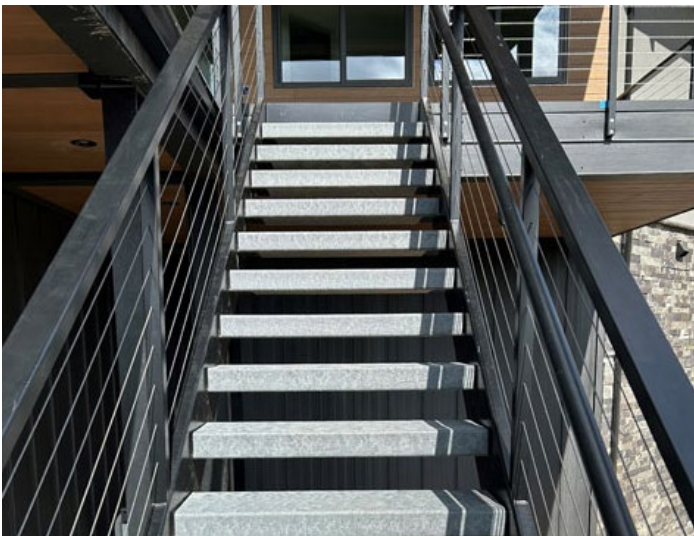
The original metal stairs of this existing apartment home complex were protected from the elements; however, concrete filled landings and precast concrete treads deteriorated over the years due to the humid climate. Perma-Tread 312 wet cement was selected as an alternative replacement solution to concrete. Perma-Tread was selected because of construction cost savings, free-span structural characteristics, no maintenance requirements, and non-corrosive properties.



OREGON - NEW RESIDENTIAL DECK STAIR

Exterior Application

This new residential deck stair was originally designed for open riser precast concrete treads. When weight and durability of concrete became a concern after the metal stair structure was installed, sourcing concrete treads became an issue for the homeowner. Perma-Tread 412 Dark Gray was selected as the final solution. The material was cut to size on site with ordinary tools and installed like lumber. Free spanning between stringers attached to seat angles from underneath.



IDAHO, EXISTING PAN FILLED STAIR RESTORATION

Exterior Application

A food processing facility needed to repair their exterior metal pan filled stairs to resolve safety concerns created by concrete corrosion. Concrete was removed from the stair pans. Perma-Tread 212 Wet Cement was selected. Cut to size on site, modified to fit the metal pan, and dropped in for an instant finish creating a better result that will not corrode again.

