

MODEL # P-1A UNIVERSAL FLAT PAN

MANUFACTURED TO SPEC BUILDING CODE COMPLIANT

- **Use:** Universal profile for any riser height, supports stair tread finish materials and precast treads
- **Material:** Hot Rolled Steel
- **Thickness:** 14 Ga. 12 Ga. 10 Ga. 1/8" metal plate
- **Finishes:** Unfinished steel, pre-galvanized, hot-dip galvanized, shop primer paint red
- **Customize:** Tread depth, laser cut holes, perforated riser

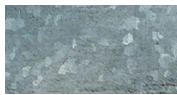
FINISH OPTIONS



Mild Steel
Unfinished



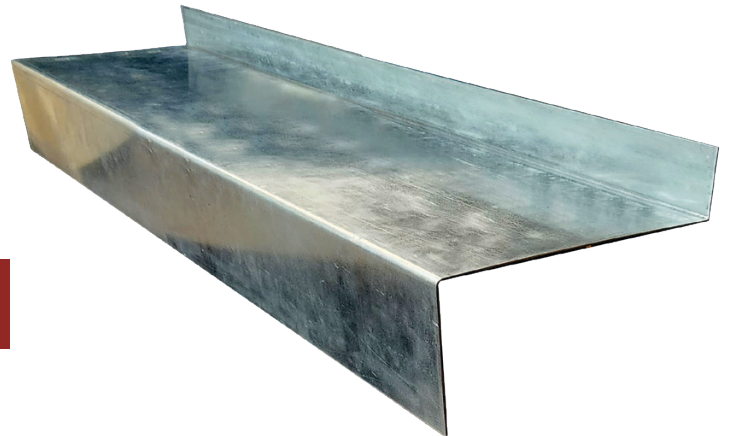
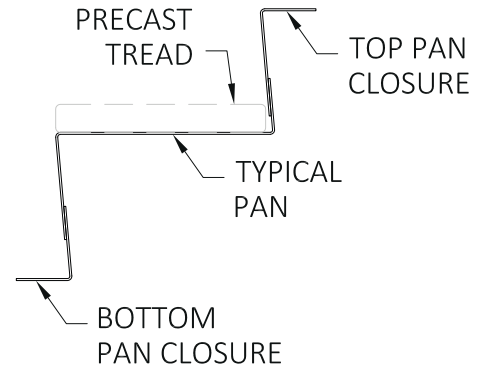
Pre-Galvanized
Sheet



Hot-Dip
Galvanized



Shop Primer
Red



FOR NEW OR EXISTING STAIR RESTORATION PROJECTS.

MODEL # P-2A UNIVERSAL RISER CLOSURE

MANUFACTURED TO SPEC BUILDING CODE COMPLIANT

- **Use:** Universal profile for any riser height, supports self supporting treads and closes the stair risers
- **Material:** Hot Rolled Steel
- **Thickness:** 14 Ga. 12 Ga. 11 ga. 10 Ga. 1/8" metal plate
- **Finishes:** Unfinished steel, pre-galvanized, hot-dip galvanized, shop primer paint
- **Customize:** Riser height, laser cut holes, perforated riser

FINISH OPTIONS



Mild Steel
Unfinished



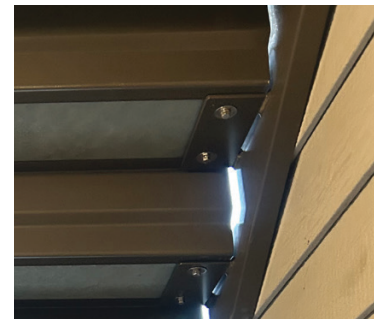
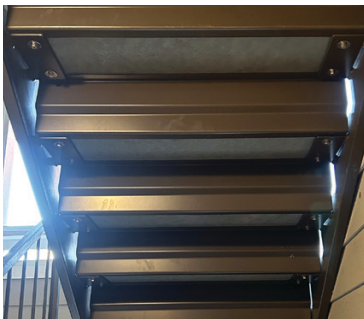
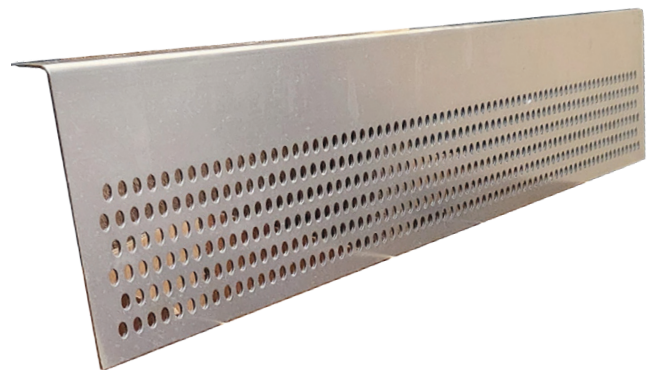
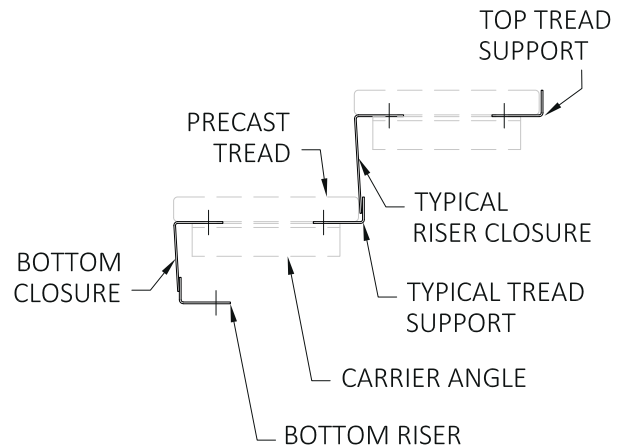
Pre-Galvanized
Sheet



Hot-Dip Galvanized



Shop Primer
Red



FOR NEW OR EXISTING STAIR RESTORATION PROJECTS.

MODEL # P-3A CONCRETE FILLED STAIR PAN

MANUFACTURED TO SPEC BUILDING CODE COMPLIANT

- **Use:** Custom fabricated profiles for fabricating metal pan filled stairs
- **Material:** Hot Rolled Steel
- **Thickness:** 14 Ga. 12 Ga. 11 Ga. 10 Ga. 1/8" metal plate
- **Finishes:** Unfinished steel, pre-galvanized, hot-dip galvanized, shop primer paint
- **Customize:** Tread depth, riser height, nosing profiles, sanitary cove, perforated riser

FINISH OPTIONS



Mild Steel
Unfinished



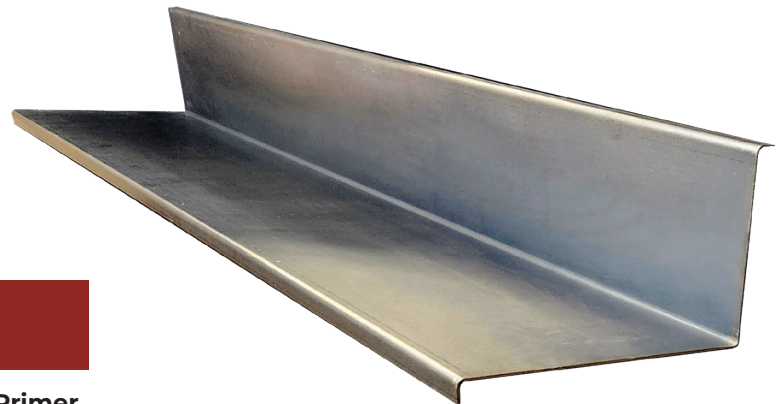
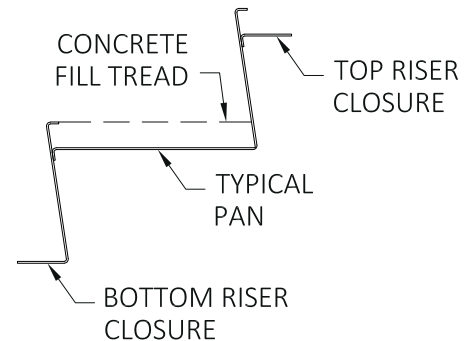
Pre-Galvanized
Sheet



Hot-Dip
Galvanized



Shop Primer
Red



FOR NEW OR EXISTING STAIR RESTORATION PROJECTS.

MODEL # P-4A CHECKER / DIAMOND PLATE STAIR PAN

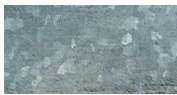
MANUFACTURED TO SPEC BUILDING CODE COMPLIANT

- **Use:** Serving as the final stair tread finish, the diamond pattern offering traction for walking
- **Material:** Hot Rolled Steel
- **Thickness:** 14 Ga. 12 Ga. 11 Ga. 10 Ga. 1/8" metal plate
- **Finish:** Unfinished steel or hot-dip galvanized, shop primer paint
- **Customize:** Tread depth, riser height, nosing profiles, sanitary cove, perforated riser

FINISH OPTIONS



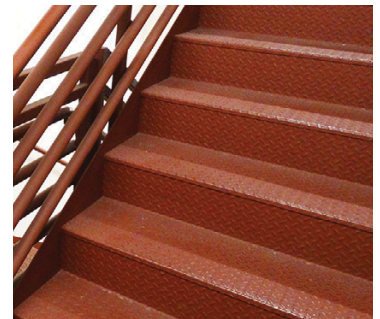
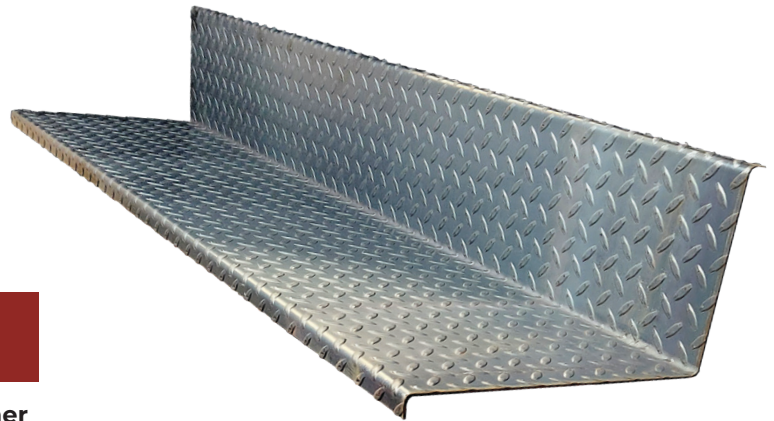
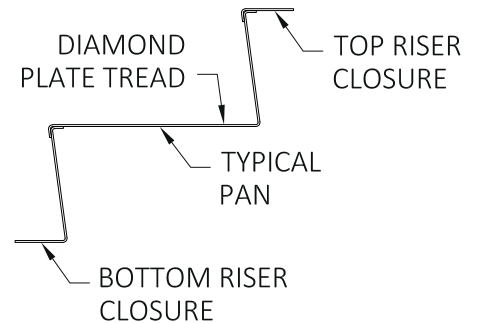
Mild Steel
Unfinished



Hot-Dip
Galvanized



Shop Primer
Red



FOR NEW OR EXISTING STAIR RESTORATION PROJECTS.

MODEL # P-5A BAR GRATING STAIR TREAD

MANUFACTURED TO SPEC BUILDING CODE COMPLIANT

- **Use:** Serving as the final stair tread finish, the grating offering traction for walking and drainage
- **Material:** Various metal bar grating options
- **Thickness:** 1.5", 2.0", 2.5"+
- **Finish:** Unfinished steel, hot-dip galvanized, shop primer paint
- **Customize:** Grating style, thickness, width, length, carrier angles, riser closure plates, perforated riser

FINISH OPTIONS



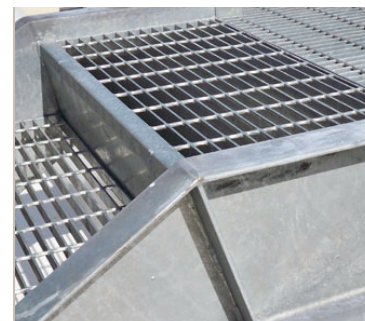
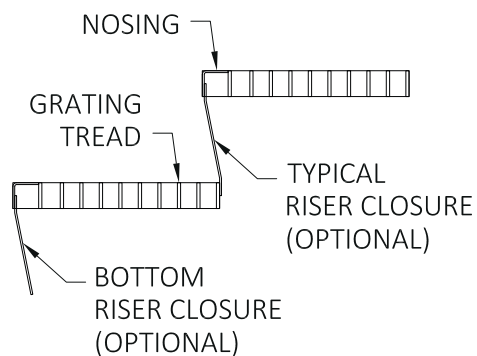
Mild Steel
Unfinished



Hot-Dip
Galvanized



Shop Primer
Red



FOR NEW OR EXISTING STAIR RESTORATION PROJECTS.